



EXTRUSION PRESS



Wings of
technology
Sprit of
innovation
UBE

UBE MACHINERY CORPORATION, LTD.

Head Office / Plant
1980, Okinoyama, Kogushi, Ube City, Yamaguchi Pref.
755-8633, Japan
Phone: +81-836-22-6276 FAX: +81-836-22-6279
<http://www.ubemachinery.co.jp>



2014.01.2000 adBREAKS

UBE MACHINERY CORPORATION, LTD.

Robust and Reliable machine developed by the spirit of innovation of UBE / JAPAN

NPC-SS series 3G

New Pre-Compression - Short Stroke Stem Slide Extrusion Press 3rd Generation

Stem Slide Structure

- Not use the hydraulic system. So there is no risk for oil leakage.
- Stem alignment is detected by the sensor at all the time.



DMI III
Data Management & human-machine Interface

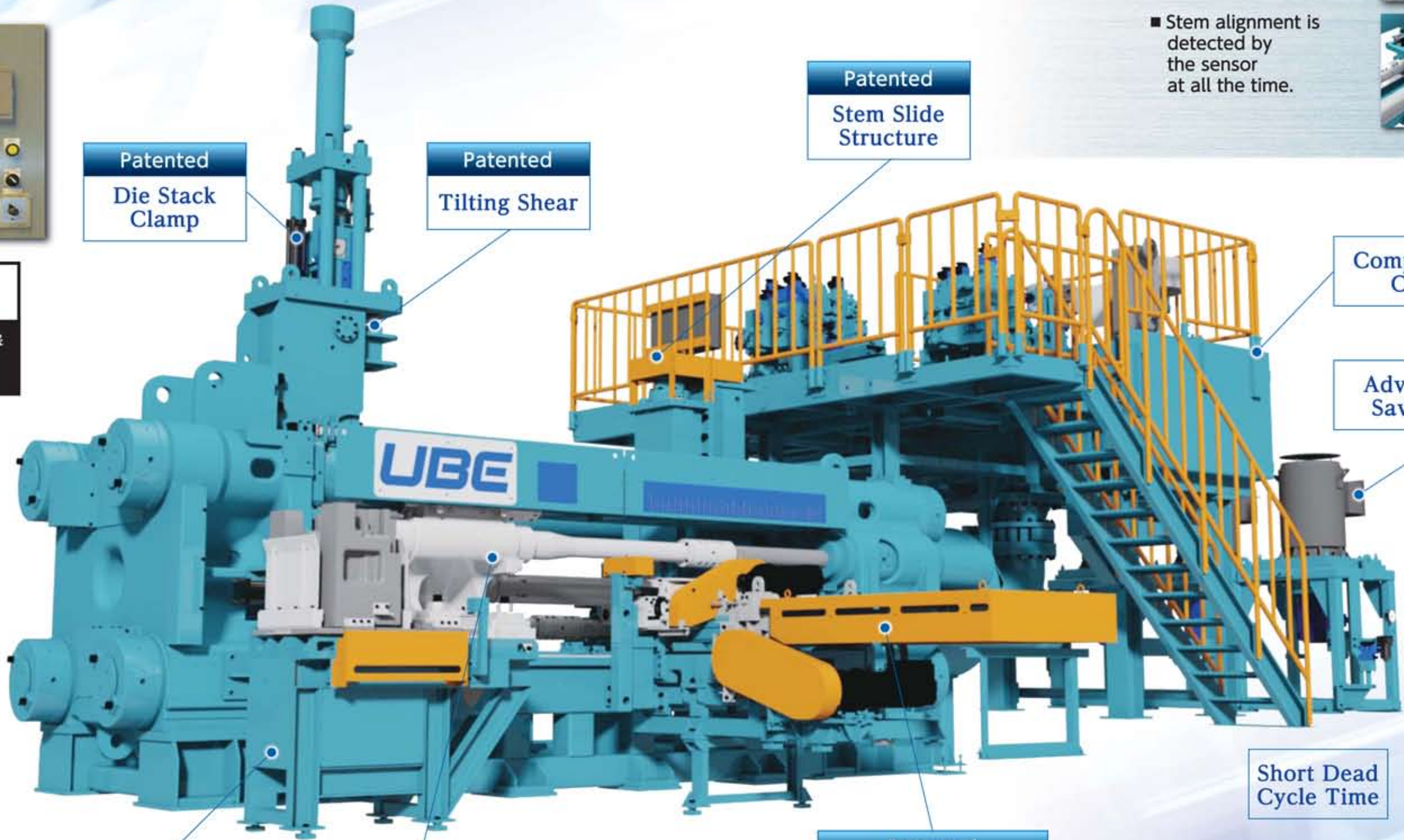
Patented Die Stack Clamp

Patented Tilting Shear

Patented Stem Slide Structure

Compact Hydraulic Components

Advanced Energy Saving (option)



Die Changer

Container Heating System

Patented Horizontal Motion Billet Loader

Short Dead Cycle Time

Driven by the Electric Motors



■ Stem Slide (Servo Motor)



■ Billet Loader (Servo Motor)



■ Die Changer (Inverter Motor)

Compact Hydraulic Components

- The smallest hydraulic oil volume
24.5 MN(2750ust) - 6000 liters.

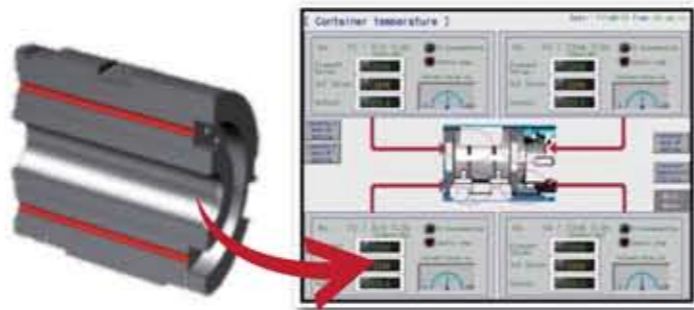


- Easy Maintenance
Almost hydraulic components are installed around the oil tank.



Container Heating System

- Container with internal cartridge heater.
- Accurate temperature control.
- Independent precise SSR 4 zones control.
- Can be set and operated on DMI-III.

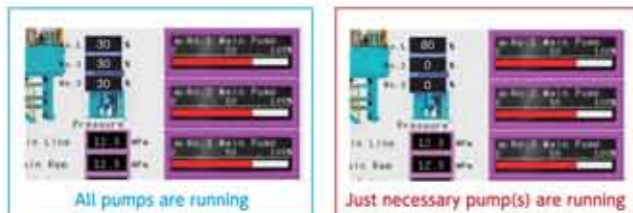


Container Seal Pump Energy Saving



- The variable displacement pump delivers only the amount of hydraulic oil to maintain container seal pressure.

Advanced Energy Saving for Extrusion (option)



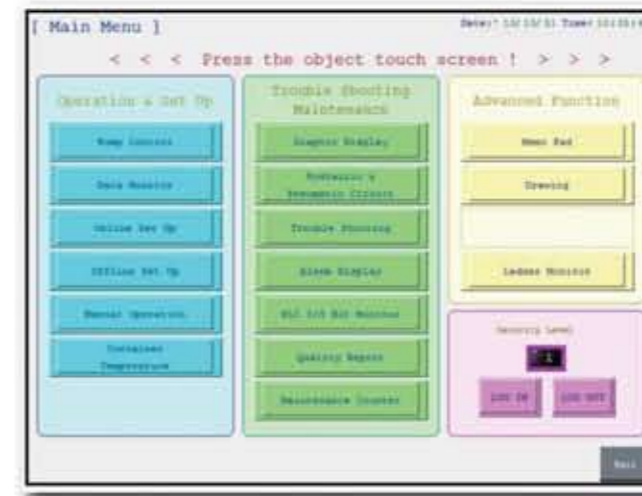
Existing system → **MAX. EFFICIENCY 16%**

- Using First in the world.
- Automatic pump selection by the system depending on extrusion speed.
- Shock less restart the pump motors for long life span of the pump motors.

DMI III

Data Management & human-machine Interface

- Data management of each Die
- Error message and alarm history
- Maintenance Support



Pendant type Operation Panel

Operation & Set Up



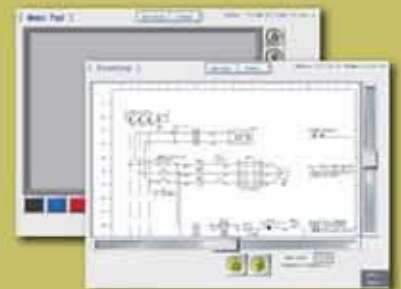
Easy Operation

Trouble Shooting Maintenance



Maintenance Support

Advanced Function



Drawings

Security Level



It is possible to change the function which can be used.



17.8MN (2000UST)
Direct Press (NPC-SS / 3G)



24.5MN (2750UST)
Direct Press for Copper



90MN (10000UST)
Direct Press (NPC-SS)



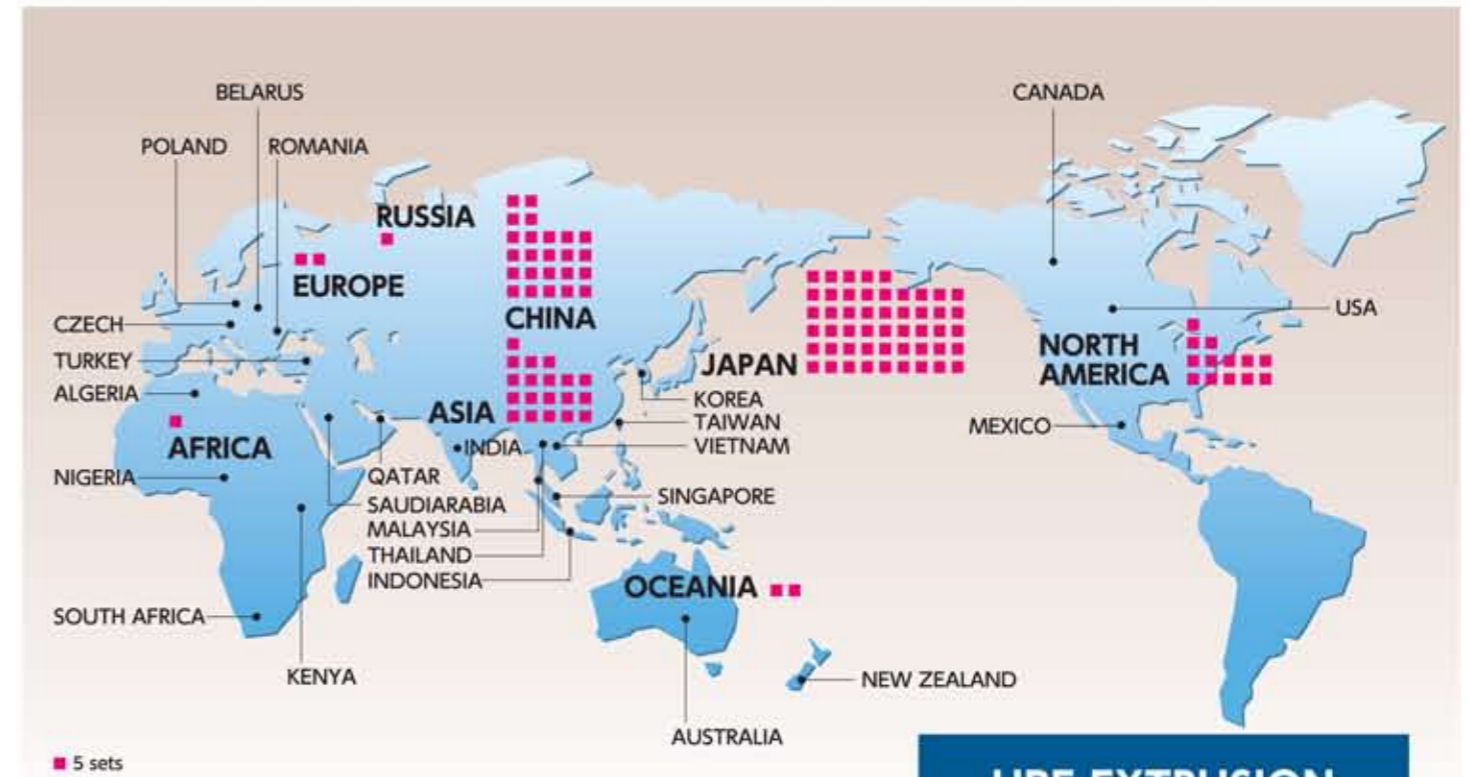
29.4MN (3300UST)
Indirect Press for Copper



65MN (7300UST)
Direct / Indirect Press



22.2MN (2500UST)
Direct Press with Piercer



**UBE EXTRUSION
PRESSES ALL OVER
THE WORLD**